

**Drum Set**

**Smoke and Mirrors**  
**Opus 43 (2016)**

**Peter Jarvis**

**Smoke and Mirrors**  
**Peter Jarvis, Opus 43 (2016)**

**Instrumentation**

- Drum set: A standard 4 piece drum set with a hi-hat and 2 cymbals is required. The drum set should be amplified.
- Electric Guitar: Effect pedals at the discretion of the performer.
- Electric Bass (7-String – if available): Effect pedals at the discretion of the performer.
- Electric Violin or an amplified traditional violin at the discretion of the performer: Effect pedals at the discretion of the performer.

**Performance Notes**

**General:**

- Accidentals apply only to the register in which they appear.
- Cautionary accidentals are often incorporated.

**Improvised Solos:**

- Each of the 4 performers has an improvised solo, which is indicated to be 8 or 12 bars. The indicated durations do not need to be adhered to.
- During the solos, the 3 non-soloist performers have indicated entrances, which do not need to be adhered to. Please feel free to make these sections your own (while remaining in a supportive roll to the soloist.)

**Drums:**

- Improvise pitches, articulations, rhythms, dynamics, etc. whenever a note is assigned to the middle line of the staff, the notation does not indicate an obligatory commitment.
- All notes that are assigned to any other space of line of the staff should be played as written.

**Bass:**

- X noteheads indicate a percussive sound of any pitch or of no pitch.

**Duration:**

c. 5' 30"

**Program Note**

*Smoke and Mirrors*, Opus 43, was completed on January 15, 2016 and is happily dedicated to the CompCord Ensemble. The piece was composed to be performed as part of New West Electronic Arts & Music Festival in San Diego on their concert 'Music & Myth'. The piece was designed to specifically showcase the virtuoso performers; Lynn Bechtold, Dan Cooper, Lukas Ligeti and Gene Pritsker.

- Peter Jarvis

# Smoke and Mirrors

Peter Jarvis, Opus 43 (2016)

## Notation

Drum Set

Bass Drum Fl. tom Snare Drum Rack tom High hat open closed Ride Cym. Crash Cym.

X notehead in the bass part indicates a percussive sound, with or without specific pitch.

Drum Set

To The CompCord Ensemble

# Smoke and Mirrors

Peter Jarvis (2015-16)

Opus 43

♩ = 80

R.S. unis. bass.

R.S. ord.

1

*mf* *sfz mf*

3

R.S. ord. R.S. ord. R.S.

*sfz mf* *sfz mf* *sfz*

improvise pitches, add syncopations, rests, articulations, etc. at your discretion

5

solo fill-like

*f* *mf*

7

*simile*

10

14

solo fill-like

*ff*

Smoke and Mirrors - Drum Set

17

fill-like

as written

Musical notation for measure 17, featuring a drum set staff with a *ff* dynamic marking and various rhythmic symbols.

19

improvise as before

Musical notation for measure 19, featuring a drum set staff with a *mf* dynamic marking and triplet markings.

21

unis. violin

Musical notation for measure 21, featuring a drum set staff with a *ff* dynamic marking and a "unis. violin" instruction.

22

unis.

change cymbal

change cymbal

Musical notation for measure 22, featuring a drum set staff with a *fff* dynamic marking and various rhythmic symbols.

24

drum solo (open)

Musical notation for measure 24, featuring a drum set staff with a double bar line and a repeat sign.

improvise, mostly in triplet subdivisions, quasi duo with bass - through m. 41 (the notated music in mm. 28-31 is only an example and in no way is it obligatory.)

28

on cue

Musical notation for measure 28, featuring a drum set staff with a *mf* dynamic marking and triplet markings.

30

Musical notation for measure 30, featuring a drum set staff with a *mf* dynamic marking and triplet markings.

32 *simile*

36

41

44 bass solo (open)  
spodically add fills throughout

48 on cue unis. bass rim shot *sim.* *sim.*

52 *sfz* *sfz* *fff* change cymbal change cymbal

54 non unis.  
e. violin solo (open)  
spodically add fills throughout

Smoke and Mirrors - Drum Set

change cymbal

on cue

58 R.S. *sim.* *sim. sim.* *sim.* *sim.* *sim.* *fff*

62 guitar solo (open)  
spodacilly add fills throughout

on cue

66 ♩ = 96 **2** E. Vln.

70 **3** unis. bass al fine  
improvise pitches

75

78

81

**Electric Guitar**

**Smoke and Mirrors**  
**Opus 43 (2016)**

**Peter Jarvis**



**Smoke and Mirrors**  
**Peter Jarvis, Opus 43 (2016)**

**Instrumentation**

- Drum set: A standard 4 piece drum set with a hi-hat and 2 cymbals is required. The drum set should be amplified.
- Electric Guitar: Effect pedals at the discretion of the performer.
- Electric Bass (7-String – if available): Effect pedals at the discretion of the performer.
- Electric Violin or an amplified traditional violin at the discretion of the performer: Effect pedals at the discretion of the performer.

**Performance Notes**

**General:**

- Accidentals apply only to the register in which they appear.
- Cautionary accidentals are often incorporated.

**Improvised Solos:**

- Each of the 4 performers has an improvised solo, which is indicated to be 8 or 12 bars. The indicated durations do not need to be adhered to.
- During the solos, the 3 non-soloist performers have indicated entrances, which do not need to be adhered to. Please feel free to make these sections your own (while remaining in a supportive roll to the soloist.)

**Drums:**

- Improvise pitches, articulations, rhythms, dynamics, etc. whenever a note is assigned to the middle line of the staff, the notation does not indicate an obligatory commitment.
- All notes that are assigned to any other space of line of the staff should be played as written.

**Bass:**

- X noteheads indicate a percussive sound of any pitch or of no pitch.

**Duration:**

c. 5' 30"

**Program Note**

*Smoke and Mirrors*, Opus 43, was completed on January 15, 2016 and is happily dedicated to the CompCord Ensemble. The piece was composed to be performed as part of New West Electronic Arts & Music Festival in San Diego on their concert 'Music & Myth'. The piece was designed to specifically showcase the virtuoso performers; Lynn Bechtold, Dan Cooper, Lukas Ligeti and Gene Pritsker.

- Peter Jarvis

Electric Guitar

To The CompCord Ensemble

# Smoke and Mirrors

Peter Jarvis (2015-16)

Opus 43

♩ = 80

3

*mf*

6

9

*f*

12

15

18

21

*mf*

16



18



20



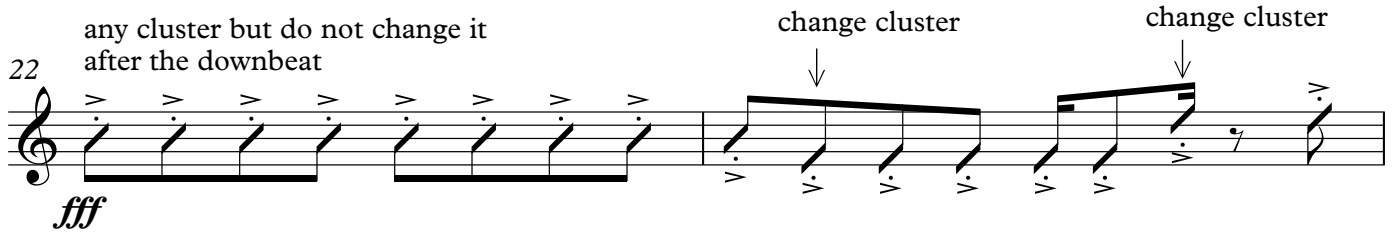
22

any cluster but do not change it after the downbeat

change cluster

change cluster

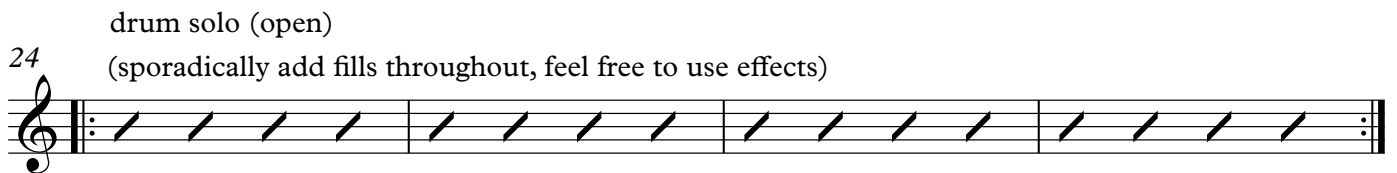
*fff*



24

drum solo (open)

(sporadically add fills throughout, feel free to use effects)



28 on cue  
ord.

*f*

30

*f*

32

*f* *poco* *mf*

34

*f*

36

*f*

38

*f*



58 on cue  
ord.

*f* *f*

60

any cluster  
change cluster  
*fff*

62 guitar solo (open)  
feel free to use effects

66  $\text{♩} = 96$

E. Vln.  
*mf* *f*

69 ord.

*mf* *f*

71 whammy bar (if available)

*ff*

74 ord. unis. violin al fine

*f*



**Electric Bass**

**Smoke and Mirrors**  
**Opus 43 (2016)**

**Peter Jarvis**



**Smoke and Mirrors**  
**Peter Jarvis, Opus 43 (2016)**

**Instrumentation**

- Drum set: A standard 4 piece drum set with a hi-hat and 2 cymbals is required. The drum set should be amplified.
- Electric Guitar: Effect pedals at the discretion of the performer.
- Electric Bass (7-String – if available): Effect pedals at the discretion of the performer.
- Electric Violin or an amplified traditional violin at the discretion of the performer: Effect pedals at the discretion of the performer.

**Performance Notes**

**General:**

- Accidentals apply only to the register in which they appear.
- Cautionary accidentals are often incorporated.

**Improvised Solos:**

- Each of the 4 performers has an improvised solo, which is indicated to be 8 or 12 bars. The indicated durations do not need to be adhered to.
- During the solos, the 3 non-soloist performers have indicated entrances, which do not need to be adhered to. Please feel free to make these sections your own (while remaining in a supportive roll to the soloist.)

**Drums:**

- Improvise pitches, articulations, rhythms, dynamics, etc. whenever a note is assigned to the middle line of the staff, the notation does not indicate an obligatory commitment.
- All notes that are assigned to any other space of line of the staff should be played as written.

**Bass:**

- X noteheads indicate a percussive sound of any pitch or of no pitch.

**Duration:**

c. 5' 30"

**Program Note**

*Smoke and Mirrors*, Opus 43, was completed on January 15, 2016 and is happily dedicated to the CompCord Ensemble. The piece was composed to be performed as part of New West Electronic Arts & Music Festival in San Diego on their concert 'Music & Myth'. The piece was designed to specifically showcase the virtuoso performers; Lynn Bechtold, Dan Cooper, Lukas Ligeti and Gene Pritsker.

- Peter Jarvis



22 any cluster but do not change it after the downbeat

*fff*

24 drum solo (open) (sporadically adds fills throughout, feel free to use effects)

28 on cue E. Gtr. 3 3 3 improvise, mostly in triplet subdivisions - through m. 41, quasi duo with drums, feel free to continue using effects. *simile*

32

40 any cluster but do not change it after the downbeat ord. *fff* change cluster change cluster

44 bass solo (open) feel free to use effects

48 on cue percussive sounds unis. drums R.S. *sim.* *sim.* *sim.*

51 *sim.* *sim.* *sim.* *sim.* ord. any cluster *fff* change cluster change cluster

e. violin solo (open)

54 spoadically add fills throughout, feel free to use effects

on cue

percussive sounds unis. drums R.S.

62 guitar solo (open) spoadically add fills throughout, feel free to use effects

on cue

unis. drums al fine



**Electric Bass**

**Smoke and Mirrors**  
**Opus 43 (2016)**

**Peter Jarvis**

**Smoke and Mirrors**  
**Peter Jarvis, Opus 43 (2016)**

**Instrumentation**

- Drum set: A standard 4 piece drum set with a hi-hat and 2 cymbals is required. The drum set should be amplified.
- Electric Guitar: Effect pedals at the discretion of the performer.
- Electric Bass (7-String – if available): Effect pedals at the discretion of the performer.
- Electric Violin or an amplified traditional violin at the discretion of the performer: Effect pedals at the discretion of the performer.

**Performance Notes**

**General:**

- Accidentals apply only to the register in which they appear.
- Cautionary accidentals are often incorporated.

**Improvised Solos:**

- Each of the 4 performers has an improvised solo, which is indicated to be 8 or 12 bars. The indicated durations do not need to be adhered to.
- During the solos, the 3 non-soloist performers have indicated entrances, which do not need to be adhered to. Please feel free to make these sections your own (while remaining in a supportive roll to the soloist.)

**Drums:**

- Improvise pitches, articulations, rhythms, dynamics, etc. whenever a note is assigned to the middle line of the staff, the notation does not indicate an obligatory commitment.
- All notes that are assigned to any other space of line of the staff should be played as written.

**Bass:**

- X noteheads indicate a percussive sound of any pitch or of no pitch.

**Duration:**

c. 5' 30"

**Program Note**

*Smoke and Mirrors*, Opus 43, was completed on January 15, 2016 and is happily dedicated to the CompCord Ensemble. The piece was composed to be performed as part of New West Electronic Arts & Music Festival in San Diego on their concert 'Music & Myth'. The piece was designed to specifically showcase the virtuoso performers; Lynn Bechtold, Dan Cooper, Lukas Ligeti and Gene Pritsker.

- Peter Jarvis

Electric Bass

To The CompCord Ensemble

x noteheads = percussive sound  
no particular pitch

# Smoke and Mirrors

Peter Jarvis (2015-16)

Opus 43

♩ = 80

percussive  
sounds

unis.  
drums R.S.

4 non unis. ord.

7

10

13

16

18

20

Engraved by Peter Jarvis  
PeterMJarvis@gmail.com



22 any cluster but do not change it after the downbeat

*fff*

24 drum solo (open)  
(sporadically adds fills throughout, feel free to use effects)

28 on cue E. Gtr. 3 3 3 improvise, mostly in triplet subdivisions - through m. 41, quasi duo with drums, feel free to continue using effects. *simile*

32

40 any cluster but do not change it after the downbeat ord. *fff* change cluster change cluster

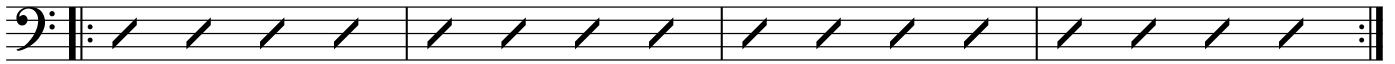
44 bass solo (open)  
feel free to use effects

48 on cue percussive sounds unis. drums R.S. *sim.* *sim.* *sim.*

51 *sim.* *sim.* *sim.* *sim.* ord. any cluster *fff* change cluster change cluster

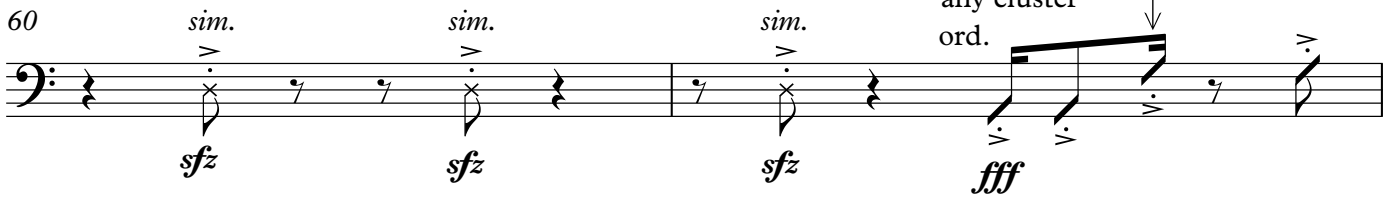
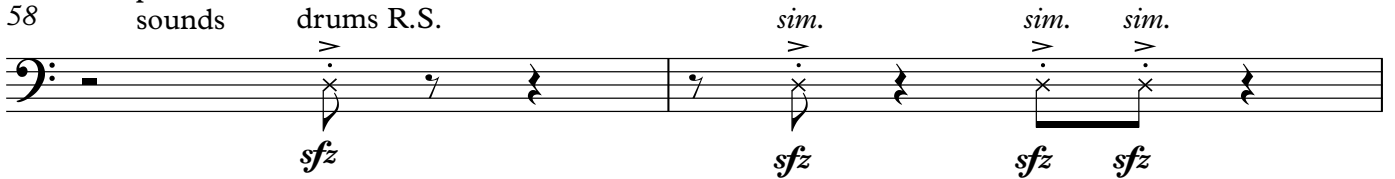
e. violin solo (open)

54 spoadically add fills throughout, feel free to use effects



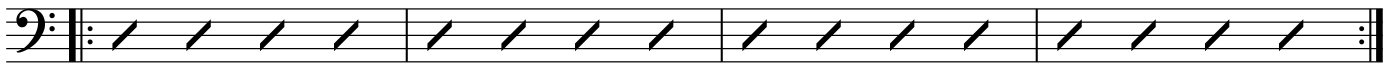
on cue

percussive sounds unis. drums R.S.



guitar solo (open)

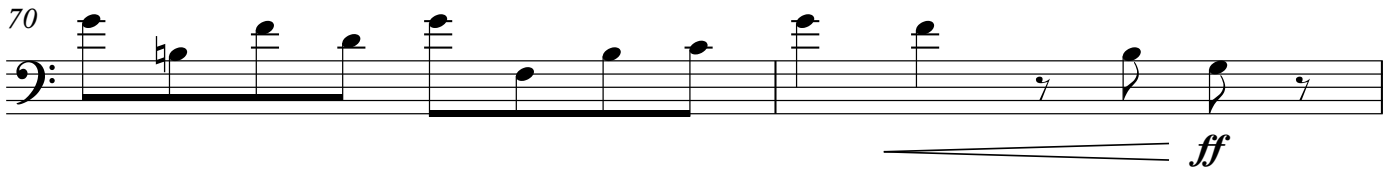
62 spoadically add fills throughout, feel free to use effects



on cue

♩ = 96

E. Vln.



unis. drums al fine



